

Price on request

Vacation rental apartment

3 rooms

Surface : 75 m²

Exposition : Sud ouest

View : Mer panoramique

Hot water : Individuelle

Inner condition : good

Standing : luxury

Features :

pool, air conditioning, visitor parking,
private beaches, tennis court, gated, calm

2 bedroom

1 terrace

1 bathroom

1 shower

2 WC

1 parking

Energy class (dpe) : Unavailable

Emission of greenhouse gases (ges) :

Unavailable

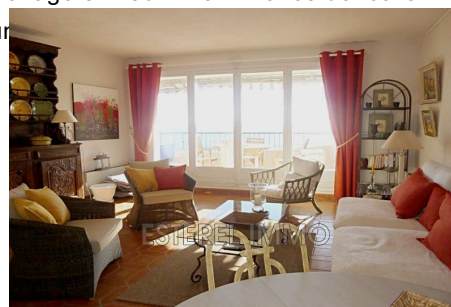
Document non contractuel

17/05/2025 - Prix T.T.C



Apartment 985 Théoule-sur-Mer

DAHLIA Cluster 29 3-room apartment, east-west exposure, unrenovated, 75m², 18m² terrace, not overlooked Access: 2nd floor by stairs Composition: entrance, living room, small independent kitchen, bedroom with a 160 cm bed, adjoining shower room with wc, second bedroom with 2 90 cm beds, shower room with wc Equipment: toaster, electric hob, oven, fridge-freezer, Nespresso, kettle, dishwasher, television, washing machine Element of comfort: air-conditioned rooms, wifi, garage in the basement in cluster 27 (50m) Located 15 km west of Cannes, on the seafront, along the Corniche d'Or, the Domaine de Port la Galère offers you apartments with unusual architecture, moving shapes and cascading terraces, on 23 hectares of exotic gardens, by the sea, an unexpected oasis of calm close to Cannes. Equipped with an Olympic seawater swimming pool, a children's pool, a magnificent clubhouse with a freshwater swimming pool, a restaurant, a fitness room, a sauna, a summer club with restaurants and bar under the straw huts, open from June to the end of September. Private bathing creeks, a port and many activities are offered, water sports, tennis, boules, children's playground and disco for teenagers in summer. The residence is



VENTE | LOCATION DE VACANCES | SALES | VACATION RENTALS

Esterel Immo (anciennement Agence La Galère) - T. +33 (0)4 93 75 40 48 ou +33 (0)4 93 75 07 30

www.lagalere.com - contact@esterel-immo.com

Port La Galère, 12 quai Bougainville, 06590 Théoule-sur-mer