



Price on request

Vacation rental apartment

Surface of the living : 30 m²

Exposition : Sud

View : Mer panoramique

Hot water : Individuelle

Inner condition : excellent

Standing : luxury

Features :

gated, Gardien, tennis, calm, pool, air conditioning, double glazing, Wifi

2 bedroom

2 terraces

1 bathroom

1 shower

Energy class (dpe) : Unavailable

Emission of greenhouse gases (ges) :

Unavailable

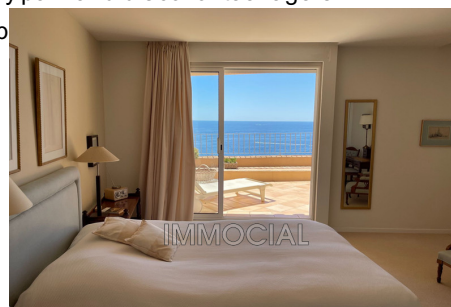
Document non contractuel

09/05/2024 - Prix T.T.C



Apartment Théoule-sur-Mer

ROSE cluster 11 3-room apartment of 90 m², panoramic sea view not far from the beaches and the summer club, south facing, 2 terraces of 20 m². Composition: entrance, living room, sofa, table, equipped kitchen, bedroom with 180cm bed with terrace access, bathroom with toilet, upstairs, second small bedroom with two 90cm beds with shower room and toilet with terrace access Equipment: toaster, electric hob, oven, fridge-freezer, microwave, Nespresso, kettle, dishwasher, television Element of comfort: air conditioning, wifi, no designated parking Located 15 km west of Cannes, on the seafront, along the Corniche d'Or, the Domaine de Port la Galère offers apartments with unusual architecture, moving shapes and cascading terraces, on 23 hectares of exotic gardens, by the sea, an unexpected oasis of calm close to Cannes. Equipped with an Olympic seawater swimming pool, a children's pool, a magnificent club house with a freshwater swimming pool, a restaurant, a fitness room, a sauna, a summer club with restaurants and a bar under the huts, open from June to the end of September. Private swimming coves, a port and many activities are offered, water sports, tennis, bowling games, children's play park and disco for teenagers in



VENTE | LOCATION DE VACANCES | SALES | VACATION RENTALS

Immocial Transactions & Gestion (anciennement Agence La Galère) - Tél 04.93 75 40 48 ou 04 93 75 04 04
port.la.galere.immocial.transactions@fiducial.fr - port.la.galere.immocial.gestion@fiducial.fr - www.lagalere.com
Domaine de Port La Galère, 75 Boulevard Corniche d'Or, 06590 Théoule-sur-mer